



GRAVUREM

Heidenpeter GmbH & Co. KG
Steel Stamps & Marking Tools

Kenkhauser Str. 6-8
D - 42929 Wermelskirchen
Phone: +49 21 96 24 39
Fax: +49 21 96 8 26 71

info@heidenpeter.de
www.heidenpeter.de

MASTUS

HEIDENPETER

Hand Stamps

In addition to number and letter punch sets, hand stamps can also be manufactured with a fixed multi-digit engraving as per customer's request. A classic application of hand stamps is the embossing of serial numbers on the individual components of machines or vehicles. Usually with the help of a punch stamp, a symbol (e.g. a star), the logo of a manufacturer or variable manufacture data are embossed on products. Graved numbers and nomenclatures are forgery-proof and more reliable than printed name plates and labels. For manufacturing individual hand stamps, different fonts are possible and logos and motifs can be realized according to a sample, sketch or data template. The diversity and creativity is virtually endless and thus the range of application extends far beyond the pure technical labelling into the creative and artistic design of jewellery, leather and wood.

Multi-Digit Hand Stamps

Article group: Hand Stamps

Line of goods: acc.to DIN 1451 / Serial-No 150

- CNC engraving for highest precision
- Combinations of numbers, letters and/or punctuation marks are possible
- Type of characters acc. to DIN 1451
- Hardness at the engraving: 58–61 HRC
- Grinded at all sides close to the engraving

Size of character	Width of Impression (mm)									
	1-digit	2-digit	3-digit	4-digit	5-digit	6-digit	7-digit	8-digit	9-digit	10-digit
2 mm	1,2	3,3	5,3	7,3	9,3	11,3	13,3	15,3	17,3	19,3
3 mm	1,5	5	8	11	14	17	20	23	26	29
4 mm	2	5,1	8,4	11,6	14,9	18,2	21,5	24,8	28,1	31,4
5 mm	2,5	6,3	10,3	14,3	18,3	22,3	24,3	28,3	32,3	36,3
6 mm	3	6	10	14	18	22,5	26	31	36	40
8 mm	3	8	13	18,5	24	30	34,5	41	47,5	52,5
10 mm	3,4	10	17	24	30	37,5	43	52	59,5	66

* All data are reference values and may deviate in individual cases.

As standard version all hand stamps have a one-line sharp faced engraving and the impression is readable. The following special versions of engraving are possible:

- Multiline Engraving
- Special Typefaces
- Reverse Engraving / Impression Mirror-Inverted
- Outline Engraving
- Flat Faced Engraving
- Engraving in a radius (concave / convex)
- LOW-STRESS Engraving
- LOW-STRESS DOT-STYLE Engraving

The manufacturing of hand stamps with individual logos and symbols is also possible. For this purpose we require a sample, a sketch or a drawing. It can certainly be provided as a file.



Control Stamps / Inspection Stamps

Article group: Hand Stamps

Line of goods: Serial-No 151

- Quality and product specifications identical with multi-digit hand stamps
- Individual marking and identification by simple symbols



Proposals:

	1	2	3	4	5	6	7	8	9	10
A										
B										
C										
D										
E										
F										

	Height of Impression	Dimensions
15102000	2 mm	10 x 10 x 80 mm
15103000	3 mm	10 x 10 x 80 mm
15104000	4 mm	10 x 10 x 80 mm
15105000	5 mm	12 x 12 x 85 mm
15106000	6 mm	12 x 12 x 85 mm
15107000	7 mm	14 x 14 x 90 mm
15108000	8 mm	14 x 14 x 90 mm
15110000	10 mm	16 x 16 x 95 mm
15112000	12 mm	18 x 18 x 100 mm
15115000	15 mm	20 x 20 x 105 mm

* The dimensions are reference values and may deviate in individual cases.

Welder's Control Stamps

Article group: **Hand Stamps**

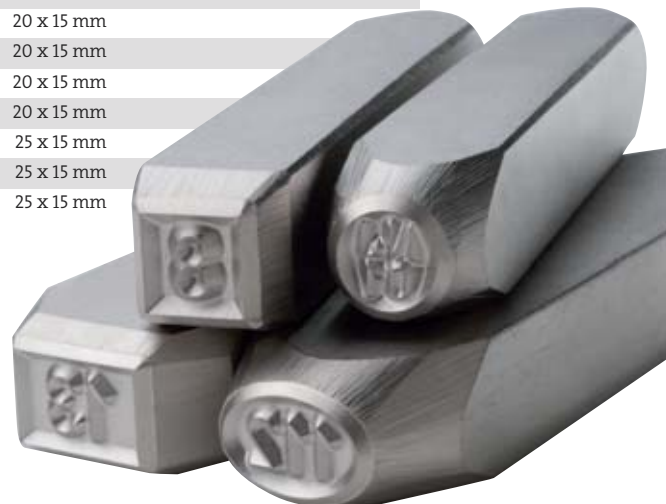
Line of goods: **Serial-No 152**

- Quality and product specifications identical with multi-digit hand stamps
- For marking and signing of welding work for the purpose of traceability and control
- Individual combinations of letters and/or numbers with a border
- The border is engraved in round, oval, square, rectangular or triangular shape
- Size of character and impression acc. to your requirements



	Size of character	Size of Border □○△	Size of Border ○
1 5 2 0 2 0 0 1	2 mm/1-digit	5 mm	8 x 5 mm
1 5 2 0 2 0 0 2	2 mm/2-digit	5 mm	8 x 5 mm
1 5 2 0 2 0 0 3	2 mm/3-digit	5 mm	8 x 5 mm
1 5 2 0 3 0 0 1	3 mm/1-digit	6-7 mm	12 x 6 mm
1 5 2 0 3 0 0 2	3 mm/2-digit	6-7 mm	12 x 6 mm
1 5 2 0 3 0 0 3	3 mm/3-digit	6-7 mm	12 x 6 mm
1 5 2 0 4 0 0 1	4 mm/1-digit	8 mm	12 x 8 mm
1 5 2 0 4 0 0 2	4 mm/2-digit	8 mm	12 x 8 mm
1 5 2 0 4 0 0 3	4 mm/3-digit	8 mm	12 x 8 mm
1 5 2 0 5 0 0 1	5 mm/1-digit	8-10 mm	15 x 10 mm
1 5 2 0 5 0 0 2	5 mm/2-digit	8-10 mm	15 x 10 mm
1 5 2 0 5 0 0 3	5 mm/3-digit	8-10 mm	15 x 10 mm
1 5 2 0 6 0 0 1	6 mm/1-digit	10-12 mm	18 x 12 mm
1 5 2 0 6 0 0 2	6 mm/2-digit	10-12 mm	18 x 12 mm
1 5 2 0 6 0 0 3	6 mm/3-digit	10-12 mm	18 x 12 mm
1 5 2 0 7 0 0 1	7 mm/1-digit	10-14 mm	20 x 15 mm
1 5 2 0 7 0 0 2	7 mm/2-digit	10-14 mm	20 x 15 mm
1 5 2 0 7 0 0 3	7 mm/3-digit	10-14 mm	20 x 15 mm
1 5 2 0 8 0 0 1	8 mm/1-digit	12-16 mm	20 x 15 mm
1 5 2 0 8 0 0 2	8 mm/2-digit	12-16 mm	20 x 15 mm
1 5 2 0 8 0 0 3	8 mm/3-digit	12-16 mm	20 x 15 mm
1 5 2 1 0 0 0 1	10 mm/1-digit	18-20 mm	25 x 15 mm
1 5 2 1 0 0 0 2	10 mm/2-digit	18-20 mm	25 x 15 mm
1 5 2 1 0 0 0 3	10 mm/3-digit	18-20 mm	25 x 15 mm

*The sizes of the border are reference values and may deviate in individual cases.



Star Punches

Article group: **Hand Stamps**

Line of goods: **Serial-No 153**

- Hand stamps for the limitation of serial numbers and other information on rating plates.
- 6-arms or 5-corners shape

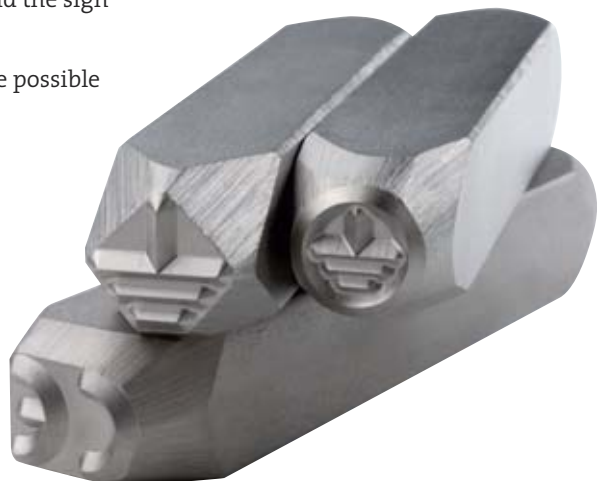


Standardized Special Symbols

Article group: **Hand Stamps**

Line of goods: **Serial-No 154**

- Hand stamps with special symbols acc. to technical and international standards
- CE-logo, earthing symbol and the sign for protective earth
- Outline or flat engraving are possible on demand



Hand Stamps with Handguard

Article group: **Hand Stamps**

Line of goods: **Serial-No 155**

- Firmly mounted handguard made of plastic with handle and large protection area
- Ensures a safe and comfortable holding of the punch and avoids injuries by slipping of the stamping head or failures
- Available for all hand stamps with a max. cross section of (15x15) mm



Assay Punches / Hallmarking Punches

Article group: **Hand Stamps**

Line of goods: **Serial-No 156**

- Straight or cranked punches (Swan Neck)
- Available with the usual degrees of fineness in 0,5 mm, 0,75 mm and 1,0 mm size of character
- Engraving in a radius (convex) for a marking on the inside of rings upon request
- Raised or recessed engraving
- Individual signatures, logos or brands can be offered upon request



Punch Grip

Article group: Hand Stamps

Line of goods: Serial-No 749

- Allows a safe distance between the stamping head and the hand of the worker
- Avoids injuries by slipping of the stamping head or failures
- Simple plastic grip with holding device
- The fitted punch gets clamped by turning the setting wheel on the backside of the grip
- Suitable for all hand stamps with a max. cross section of 20 x 20 mm



Safety Grip

Article group: Hand Stamps

Line of goods: Serial-No 750

- Allows a safe distance between the stamping head and the hand of the worker
- Avoids injuries by slipping of the stamping head or failures
- Strong and durable metal construction for the heavy-duty industrial use
- Quick-change device with spring-locking
- Suitable for all hand stamps with a max. cross section of 20 x 20 mm

